

Letters home this week: Y3 - Reading Plus, Y2 - Selly Manor Museum, Y5 - Drayton Manor

## What's on in school next week:

Monday	Tuesday	Wednesday	Thursday	Friday
Library - 3.05..... Y1,2 - Top Score Multi Skills Y3,4 - Embody Dance Y4, 5 - Keyboard Y5,6 - Painting	Pine - Swimming Y1,2 - Aston Villa Y3-6 - Choir	Y1,2 - Look What I Have Made Y2 - Nature Club Y3,4 - Brain Puzzles	Y3,4 - Top Score Multi Skills Y4 - Drawing Y6 - Ukelele	Oak - Swimming Library - 3.05 - .... Eco Councillors - Gardening Club Y2-6 - Musical Theatre

If your child has not received their copy of these letters or the 'Bugle' please contact their class teacher or the office

**REMINDER : Please ensure your children remember to bring all they need in school each day.**

## Covid-19 update

Unfortunately, as many predicted, Covid is continuing to have an impact on all of our lives. Outside of school we are experiencing shortages of food and petrol due to haulage and logistical issues, doctors surgeries and hospitals continue to be put under increased pressure and international travel restrictions remain.

Inside schools, Covid is also continuing to present challenges on a daily basis. We are very pleased to have opened in September without the need to keep children separated in year group bubbles. Enabling children to mix again and sit in groups around tables inside classrooms is very important in ensuring children access the curriculum in the most effective way. We know how children learn best and are pleased we have been able to 'Teach and Learn' again away from the bubble restrictions that were enforced upon schools.

Since September, we have had a number of reported cases of staff and children who have tested positive across school. I am thankful that all of our staff and children have had relatively minor symptoms and are all currently recovering well or have already returned back to school after their 10-day isolation period.

Staff across school continue to take regular Lateral Flow tests (LFT). If they receive a positive result on an LFT or demonstrate symptoms of Covid, they are booking PCR tests and are not back in school until they receive a negative result, or if positive, after serving a 10-day period of isolation. As you can imagine, this is causing significant strains on staffing levels in school. We currently have a number of staff who are isolating, waiting on a test result, or who are unable to be in school due to other illnesses. This will mean that at times your child's class may have a different teacher or teaching assistant leading their learning. I am very pleased that so far we have been able to cover all absences to date with our own staff and will continue to try to do this. Using Birchwood staff ensures that your child will continue to receive quality teaching and learning from staff who know our school, expectations and procedures. I am very grateful that Birchwood have such a wonderful, caring and supportive staff. It is only because of their efforts that we have been able to cover all absences internally.

Due to the number of positive cases, we have reintroduced some of our previous control measures in school. Staff will be wearing face masks when moving through school or in communal areas. We also require any parents or visitors who are entering the school building to also wear a face covering. Children are able to mix outside their year group bubbles, .....



## Class Performances are Back!

All photographs can be purchased for £3 per A4 colour copy.

Please see ParentPay for details.

Continued.....

but we have put in measures to reduce this where it does not have a positive impact on their education. Additional handwashing, sanitising and touch point cleaning remain in place during this period.

Please continue to follow Public Health England guidance and should you need any further advice regarding school matters, the Administration team in the school office are always willing to offer their support.

We will continue to face the challenges of Covid head-on and will do so as a whole school community.

**N Coleman**  
**Headteacher**

## Applying for a Secondary School Place

Children born between **01/09/2010** and **31/08/2011** are due to start Secondary School in September 2021. **The deadline for on-time applications is 31st October 2020.**

Warwickshire residents can make an on-line application for Primary and Secondary places at [www.warwickshire.gov.uk/applyforschool](http://www.warwickshire.gov.uk/applyforschool). You can also apply by calling 01926 742037 or 01926 742047.



## Spotlight this week is ...

### **Being a brilliant Birchwood learner**

Being a great learner is about so many things and when I get the opportunity to see lessons and activities around school, I am fortunate to see our children demonstrating so many of them all the time. They are really focused and listening to their teachers and teaching assistants, actively taking part in lessons and activities by answering questions, talking to their partners or groups and responding to the feedback they are given. At Birchwood, feedback is often given verbally during a lesson so children can act on it straight away, making it even more useful to them in helping them to improve.

Showing you are a great learner also means you need to know how to tackle those times when learning is more challenging and being resilient. This means being able to keep on persevering and having a go at new learning even when it seems a little tough at first. Sometimes it really helps to take a moment to stop, reflect and think what you already know and how it can help you with the task you have to do.

Often the best learners work really well with others. They know that they don't always know all the answers or the best way to do something and they listen to others' ideas too. Learning to work with other people and share ideas is a good skill to have because we all have great ideas and sharing them, so we achieve even more together, is a fantastic way to boost our learning.

Be a brilliant Birchwood learner – focused, active, resilient, reflective, always trying your best and working together well.

**Mrs Day - Associate Headteacher**

## Holidays in Term Time

In actual fact, THE LAW is very strict about holidays in term time and the school has no choice! The school is inspected by OFSTED to make sure it follows the rules properly and the Warwickshire Attendance Service (WAS) have a legal responsibility to monitor school attendance on behalf of the Local Authority. WAS will inspect registers and if unhappy will prosecute parents.

Parents often think it is the school that make up the rules, but this is wrong. The school must simply follow the rules laid down by others. We hate upsetting parents who we have a great relationship with, but we often feel at the sharp end of apparently being responsible for the law.

### **Y6 Parents—Applying for a Secondary School Place**

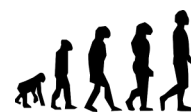
#### **(Please cut out and keep these important dates)**

Below is the timetable for entry to secondary school in September 2022:

The application period starts	Monday 6th Sept 21
Closing date for applications	Sunday 31st October 21
National Offer Day	Tuesday 1st March 22
Deadline for accepting the offer	Tuesday 15th March 22



## **YEAR 6 EVOLUTION AND ADAPTATION ASSEMBLY.**



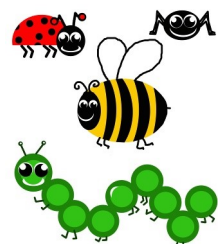




## Birmingham Botanical Gardens

Year 3 had a fantastic day at Birmingham Botanical Gardens on Wednesday. Luckily, the weather was kind to them and they had a rain-free day.

They had fun searching the woodland and pond habitats doing a bit of minibeast hunting and pond dipping; and they even found some newts in the pond. Afterwards, they had a session all about plants. They learnt about what plants need to grow well and about the life cycle of a plant, which involved one of them getting dressed up as a bee!





## **Academic Year 2021-2022**

### **Autumn Term 2021**

Childrens Choice Menu	Thursday 7th October
<b>Y2 Selly Manor Museum</b>	<b>Thursday 14th October</b>
<b>Y5 Drayton Manor Trip</b>	<b>Friday 15th October</b>
Half Term (1 week)	Monday 25th October
Professional Development Day	Monday 1st November
Open Morning for New Starters	Tuesday 2nd November
Parents Evening	Tuesday 9th November
Parents Evening	Wed 10th November
Year 5 Assembly	Thursday 18th November
Open Morning for New Starters	Friday 26th November
Term Ends for Christmas 1 pm	Friday 17th December

### **Spring Term 2022**

Staff Inset Day	Tuesday 4th January
Children Return to School	Wednesday 5th January
Y4 Assembly	Thursday 20th January
Half Term (1 week)	Monday 21st February
Professional Development Day	Monday 28th February
Parents Evening	Tuesday 8th March
Parents Evening	Wednesday 9th March
Y3 Assembly	Thursday 17th March
Easter Hats/Eggs	Friday 8th April
Term Ends for Easter (2 weeks)	Friday 8th April

### **Summer Term 2022**

May Day	Monday 2nd May
Y1 Assembly	Thursday 12th May
Class Photographs	Monday 16th May
Sponsored Walk	Friday 27th May
Half Term (1 week)	Monday 30th May
Y2 Assembly	Thursday 16th June
Professional Developments Day	Friday 24th June
Farmers Market	Friday 1st July
Warwickshire Moving Up Day	Wednesday 6th July
Show and Share Evening	Thursday 14th July
Y6 Leavers Disco and BBQ	Tuesday 19th July
Term Ends for Summer	Thursday 21st July

These dates may be subject to change if necessary.

Details and times to be confirmed nearer each event.

Please note the early finish on 17th December 2021 and 21st July 2022. If this will cause you any problems, please speak to a member of

## **YEAR 2**

Please can we ask that early next week, children in Year 2 bring in small empty cardboard boxes from home.

These should be no bigger than a shoe box. These will be used for a project in a lesson.

Thank you.



## **Information leaflets and adverts sent or published by Birchwood Primary School**

Birchwood Primary does not endorse any of the services, or products advertised and does not give any representation or warranty about any of the organisations. Birchwood Primary School is not an agent for any of these organisations and any enquiry concerning their services and/or products should be referred directly to them.

## **Birchwood Primary School Website**



## **Our registered charity 2020/21**

**ZELLWEGER UK. Amount raised so far:**  
**£2343.17**



<https://www.jobcentrejobs.co.uk/>



Please note that although we check the suitability of Applications, they can be changed without notice. Parents should therefore check the Application BEFORE



**BASED AT  
THE DORDON CLUB  
LONG ST.  
B78 1PZ**


**DANCE & FITNESS CLASSES**

**BALLET / TAP / MODERN /  
COMMERCIAL JAZZ /  
NATIONAL FOLK /  
FLEXIBILITY /  
ZUMBA / PILATES /  
LBT / DANCE FIT /  
PERFORMING ARTS**

**+ GROUP & INDIVIDUAL PERSONAL TRAINING**

**07880 714532**  
**www.TJHDANCEANDFITNESS.CO.UK**





**CAMEO DANCE** EST.2003

**FUN CHILDRENS DANCE CLASSES HELD IN POLESWORTH**

**Little Dancers from age 2 ½, Tuesdays & Fridays  
4:30 – 5:30pm The Memorial Hall, Polesworth**

**Juniors from age 7, 5:30 – 7:30pm  
The Memorial Hall, Polesworth  
Tuesdays & Fridays 5:30 – 7:30**

**Classes include Ballet, Tap, Acrobatics, Modern  
plus lots more FIRST TRIAL CLASS IS FREE!**

**Call Liz 07443421867**

**Cameo is a great place to build confidence, develop dance  
skills, and make good friends whilst working towards our  
annual show weekend, with no pressure**

**Cameodance.co.uk \* cameodance@rocketmail.com**

**Facebook Cameo Dance or search Cameo Dance Polesworth**

**Covid-19 Secure \* See Facebook for up to date  
opening information**